

New Tram in Tampere

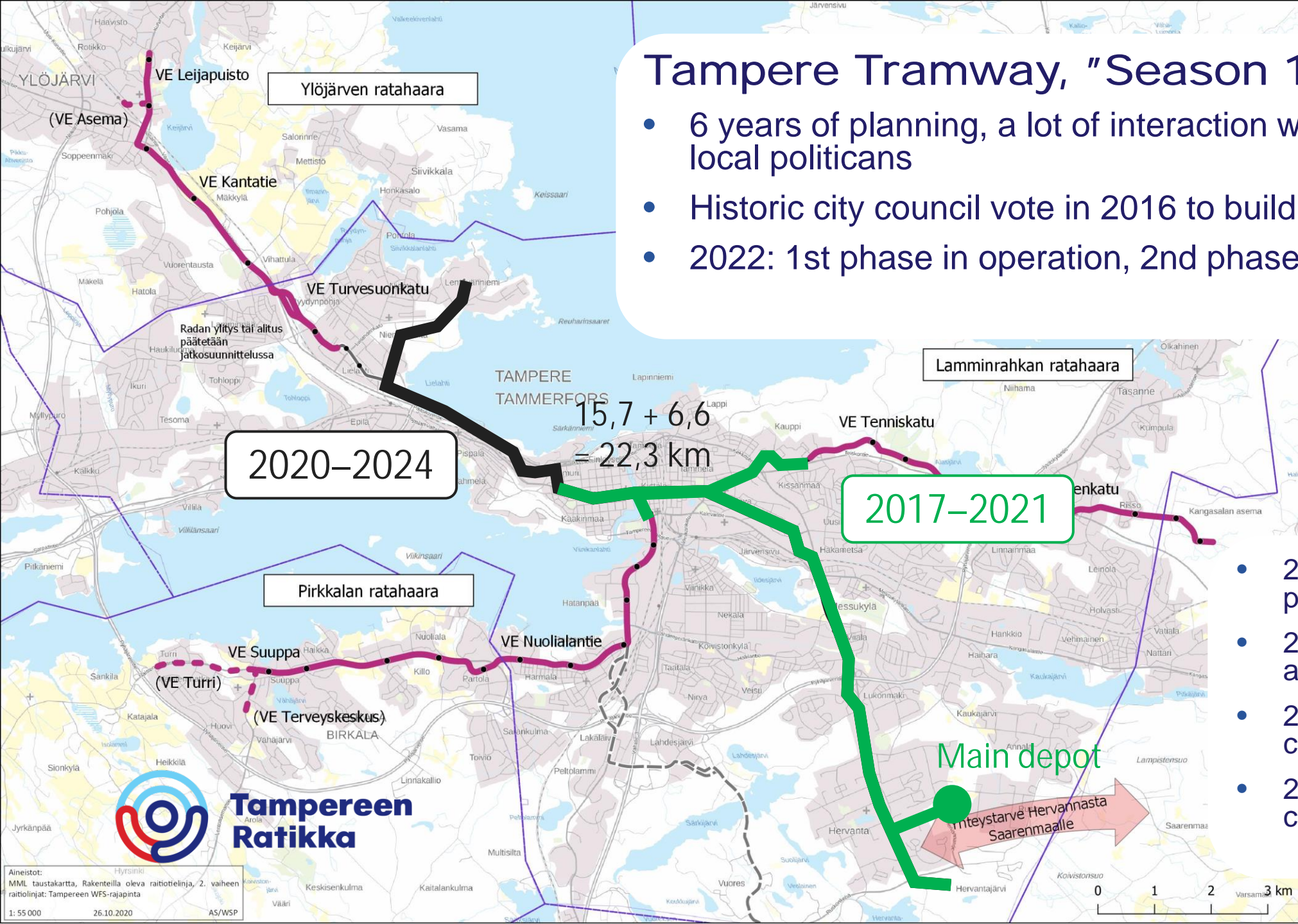


**Tampereen
Ratikka**

21st Nordic Seminar on Railway Technology
Tampere, 22 Jun 2022
Antti Haukka, Tampere Tramway Ltd

Tampere Tramway, "Season 1": 2010–2024

- 6 years of planning, a lot of interaction with the public and local politicians
- Historic city council vote in 2016 to build the 1st phase
- 2022: 1st phase in operation, 2nd phase in construction



- 2011: Preliminary general plan approved
- 2014: General plan approved
- 2016: 1st phase construction approved
- 2020: 2nd phase construction approved

The map illustrates the planned expansion of the Tampere Tramway system over several decades. Key features include:

- Blue Line (2029–2032):** A branch extending from the city center towards Ylöjärvi.
- Green Line (2025–2028):** A central backbone route connecting various parts of the city.
- Red Lines (2025–2028):** Two branches originating from the green line, one heading south-east and another west.
- Purple Line (2033–2036):** A branch extending eastwards from the central area.
- Yellow Line (2030's):** A branch extending south from the central area.
- Orange Arrow:** Points towards "Hietestaruve Hervannasta Saarenmaalle".

Other labels on the map include: Ylöjärven ratahaara, Turvesuonkatu, Radan ylitys tai alitus päätetään jatkosuunnittelussa, TAMPERE TAMMERFORS, Keskus, BIRKALA, and Tampereen Ratikka logo.

Tampere Tramway, "Season 2": 2025–2040

- The system will expand beyond city borders to form a backbone for the whole regional public transport network
- The objective is to have one branch in construction while the next branch is being prepared in detailed planning

- 2020: General plan approved in all four municipalities
- 2021–2022: further planning on the red and blue branches
- 2024: city council votes for construction on the red branches (objective)

- [illegible]

[illegible][illegible]

Tampere Tramway, "Season 2": 2025–2040

- The system will expand beyond city borders to form a backbone for the whole regional public transport network
- The objective is to have one branch in construction while the next branch is being prepared in detailed planning

2029–2032

2025–2028

2025–2028

2033–2036

2030's

Tampereen Ratikka

2020: General plan approved in all four municipalities

2021–2022: further planning on the red and blue branches

2024: city council votes for construction on the red branches (objective)

Tampere Tramway, "Season 2": 2025–2040

- The system will expand beyond city borders to form a backbone for the whole regional public transport network
- The objective is to have one branch in construction while the next branch is being prepared in detailed planning

2029–2032

2025–2028

2025–2028

2033–2036

2030's

Tampereen Ratikka

2020: General plan approved in all four municipalities

2021–2022: further planning on the red and blue branches

2024: city council votes for construction on the red branches (objective)

-
- The map illustrates the planned expansion of the Tampere Tramway system over several decades. Key features include:
- Blue Line (2029–2032):** A branch extending from the city center towards Ylöjärvi.
 - Green Line (2025–2028):** A central backbone route connecting various parts of the city.
 - Red Lines (2025–2028):** Two branches originating from the green line, one heading south-east and another west.
 - Purple Line (2033–2036):** A branch extending eastwards from the central area.
 - Yellow Line (2030's):** A branch extending south from the central area.
 - Orange Arrow (2040+):** Points towards "Hietestaruve Hervannasta Saarenmaalle".
- Other labels on the map include "Ylöjärven ratahaara", "Tampereen Raitiotie", "VE Leijapuu", "VE Kari", "Turvesuonkatu", "Rahkan ratahaara", "VE Piettasenkatu", "VE Suuppa", "VE Nuolialantie", and "Birkala". A scale bar at the bottom right indicates distances up to 2 km.
- ## Tampere Tramway, "Season 2": 2025–2040
- The system will expand beyond city borders to form a backbone for the whole regional public transport network
 - The objective is to have one branch in construction while the next branch is being prepared in detailed planning
- 2020: General plan approved in all four municipalities
 - 2021–2022: further planning on the red and blue branches
 - 2024: city council votes for construction on the red branches (objective)

1st phase construction completed on schedule and under budget

- Two tramlines, 7,5 min headway
- 15,7 km of double-track, 1435 mm gauge
- 23 stops, 1 depot
- Construction time 4,5 years
→ Delivered on time
- Total budget **299 M€** (253 M€ tramway + 46 M€ other construction)
→ Realized budget: **262 M€**

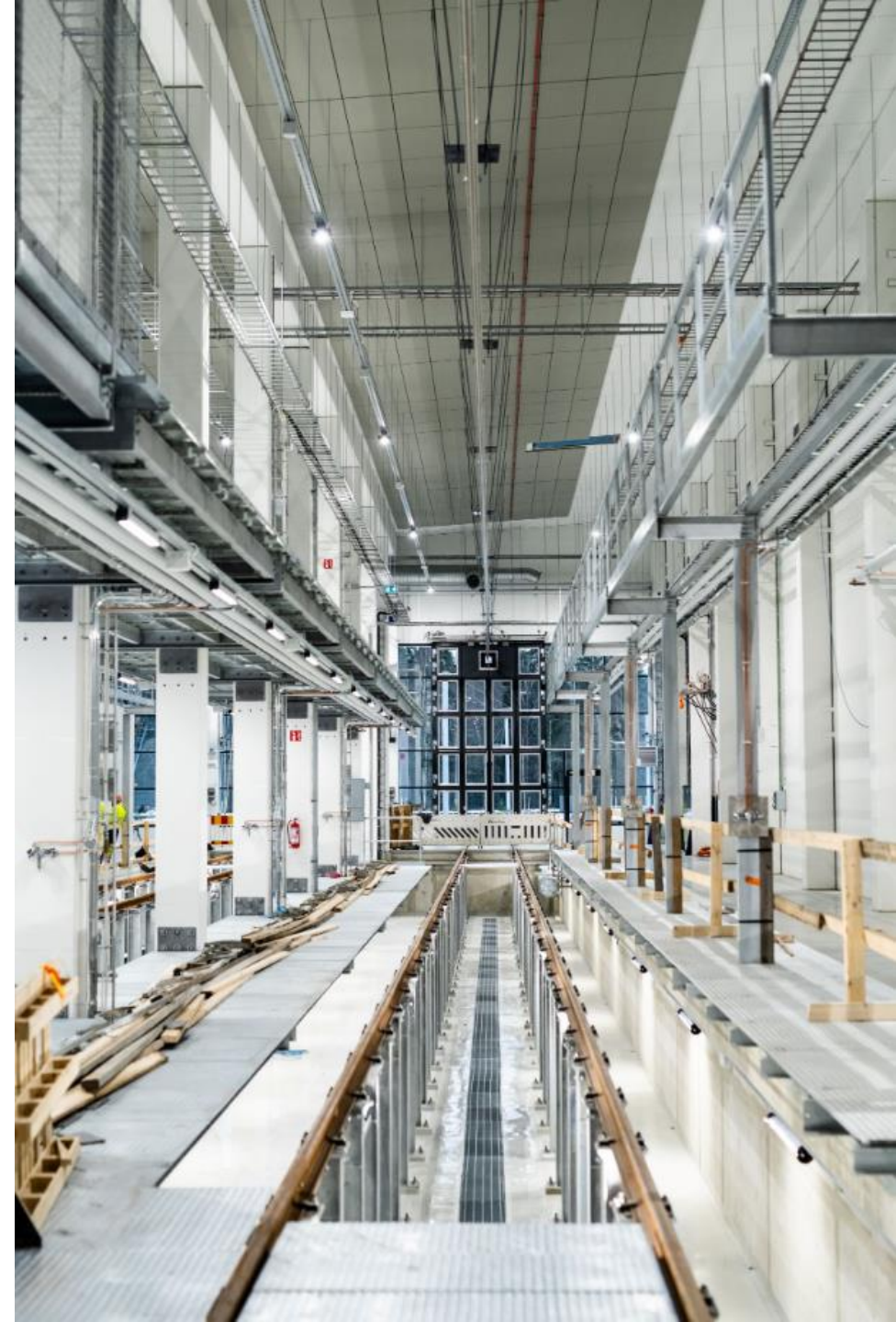




Depot



**Tampereen
Ratikka**



Tampereen
Ratikka



Main street:
20 km/h



Tampereen
Ratikka



Mixed traffic lane:
30 km/h



Tampereen
Ratikka



Green track:
40 km/h



**Tampereen
Ratikka**



**Tampereen
Ratikka**

Ballasted track:
50–70 km/h

2nd phase in construction and on schedule

- One tramline extension
- 6,6 km of double-track
- 7 stops, no depot
- Construction time 4 years
- Total budget **115 M€** (86 M€ tramway + 29 M€ other)

→ Planned opening in two phases:
1st phase 7 Aug 2023 and
2nd phase Dec 2024





Oct 2021: Joining rails
of phases 1 and 2



Tampereen
Ratikka



Tampereen
Ratikka

Nov 2021: Bridge over
major railway tracks



Jan 2022: Ground
works in Winter



Tampereen
Ratikka





May 2022: Future
western terminus



Tampereen
Ratikka



Jun 2022: Welded
rails waiting on site



Tampereen
Ratikka



Jun 2022: Tram stop
taking shape



Tampereen
Ratikka

Operation and maintenance phase has started brightly

- Opened precisely as planned on 9 Aug 2021 at 4.26 AM
- Reliability, punctuality and customer happiness on excellent levels
 - Integration to the transport system and winter maintenance have been successful
- 30 000–40 000 daily passengers
 - Good result concerning Covid-19 pandemic, but still room to improve





**Tampereen
Ratikka**

Plenty of snow in
winter 2021/2022



**Tampereen
Ratikka**

Ice hockey gold medal
party, May 2022

Skoda ForCity Smart Artic X34

- 20 tram fleet: delivered in 2020–2021, budget **82 M€**
- 5 more trams (1st option): delivery in 2024, budget **24 M€**
- Made in Finland
- Dimensions: L 37,3 m, W 2,65 m, H 3,6 m
 - Option to lengthen to 47,3 m
- Capacity: 264 passengers (104 seats)
- Bi-directional, 100 % low-floor, 1435 mm gauge





Tampereen
Ratikka

Interior design

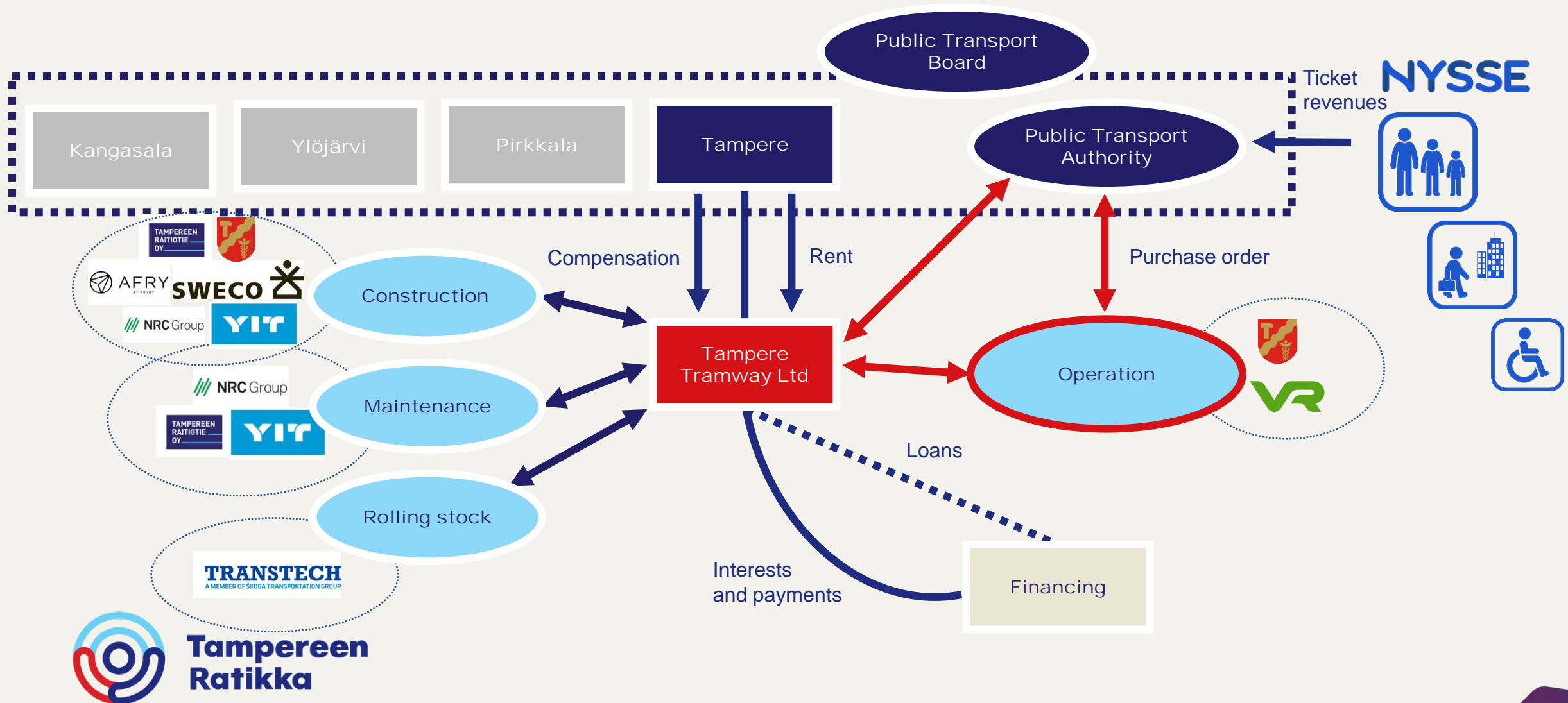
The Art Tram



Tampereen
Ratikka



Tampere Tramway organization



In the alliance model we trust



Traditional contract

- 20 trams (+46 option)
- Maintenance 10 years (+ options 10 + 10 + 10 years)
- Tampere Tramway Ltd, Škoda Transtech Oy



Construction alliance

- Construction 4+4 years
- Tampere Tramway Ltd, City of Tampere, NRC Group, YIT, Pöyry Finland

Maintenance alliance

- Maintenance 10 years
- Tampere Tramway Ltd, NRC Group, YIT



Operation alliance

- Operation 12 years (+ option 3 years)
- Nysse (PTA), Tampere Tramway Ltd, VR-Yhtymä Oy

Welcome aboard!



**Tampereen
Ratikka**



Antti Haukka, Tampere Tramway Ltd
Twitter, LinkedIn
antti.haukka@tampereenraitiotie.fi
+358 40 180 7096